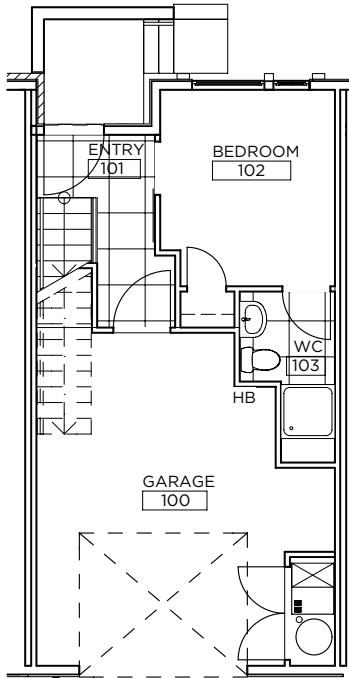


BACKYARD RESIDENCES

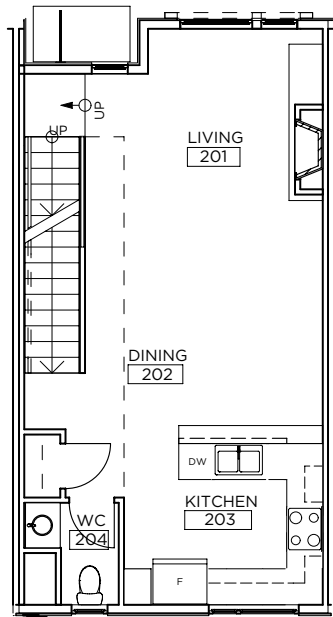


LIVE WHERE YOU PLAY.

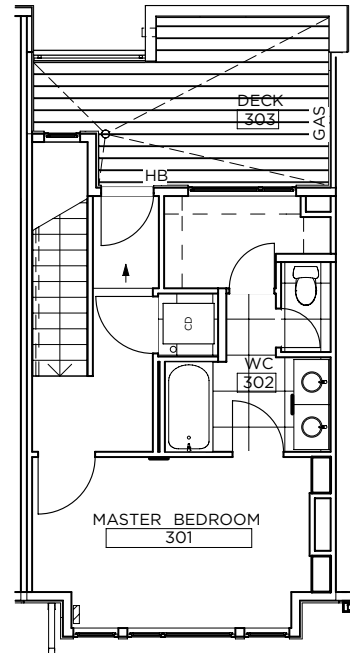
MODEL UNIT C INTERIOR



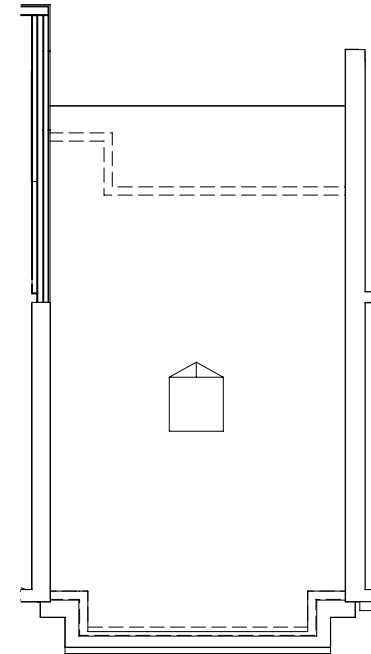
FIRST FLOOR
SCALE: 1/8" = 1'-0"
TYPE C - TYPICAL



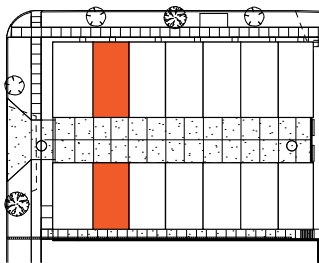
SECOND FLOOR
SCALE: 1/8" = 1'-0"
TYPE C - TYPICAL



THIRD FLOOR
SCALE: 1/8" = 1'-0"
TYPE C - TYPICAL



ROOFTOP
SCALE: 1/8" = 1'-0"
TYPE C - TYPICAL

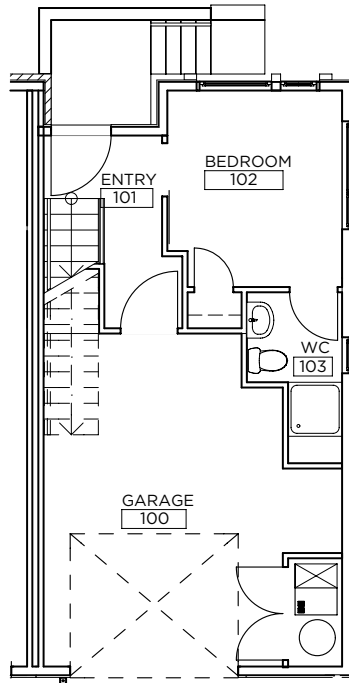


Unit 2
Unit 9

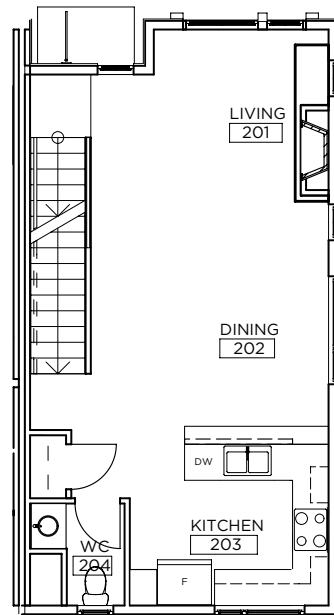
For further information contact Liz Richards of Kentwood City Properties at (303) 956-2962 or Lrichards@kentwoodcity.com.

Any and all details depicted are approximations and will change including, but not limited to dimensions, size, specifications, layout, colors and materials and Developer reserves the right to make modifications to all items without notice. Please refer to the real estate purchase contract for change and communication procedures.

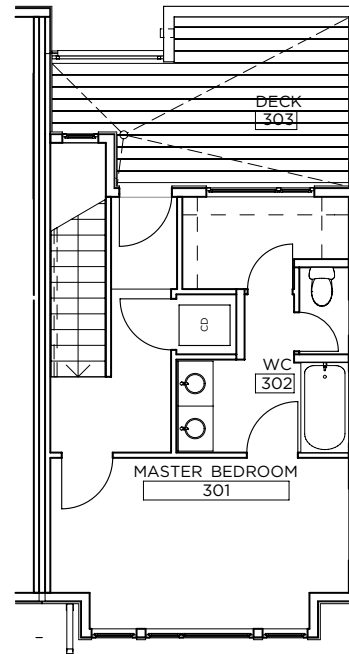
MODEL UNIT C CORNER



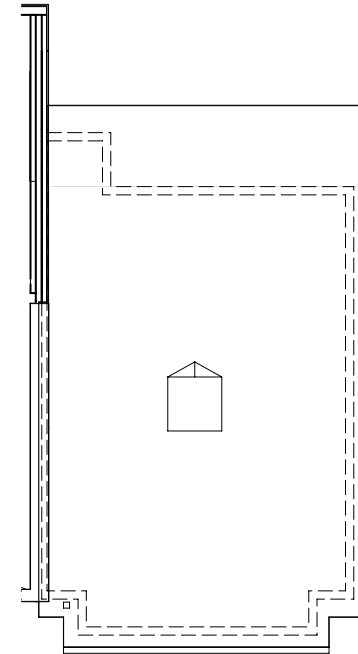
FIRST FLOOR
SCALE: 1/8" = 1'-0"
TYPE C - CORNER



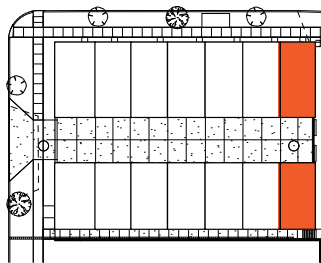
SECOND FLOOR
SCALE: 1/8" = 1'-0"
TYPE C - CORNER



THIRD FLOOR
SCALE: 1/8" = 1'-0"
TYPE C - CORNER



ROOFTOP
SCALE: 1/8" = 1'-0"
TYPE C - CORNER



Unit 7
Unit 14

For further information contact Liz Richards of Kentwood City Properties at (303) 956-2962 or Lrichards@kentwoodcity.com.

Any and all details depicted are approximations and will change including, but not limited to dimensions, size, specifications, layout, colors and materials and Developer reserves the right to make modifications to all items without notice. Please refer to the real estate purchase contract for change and communication procedures.

FEATURES & OPTIONS

Standard Features

- Modern urban architectural design
- Contemporary European cabinets throughout
- Solid quartz countertops with undermount sinks in kitchens and bathrooms
- Kitchenaid stainless steel appliance package including gas range with convection oven
- Modern gas fireplaces in the living room
- 4 inch stained white oak wood flooring on the entry stairs and main living level
- Clear coat, solid core birch wood interior doors
- Spacious master bedrooms with walk-in closets
- Guest bedrooms with en-suite bathrooms
- 12" X 24" designer tile in all master and guest bathrooms
- One or two car garages with extra storage space

Buyer Options*

- Extended Rooftop Deck (adds an additional 244 square feet of roof top decking)
- Rooftop wet bar with European Cabinets and refrigerated beverage center
- Built-in Buffet or Desk on main living level
- Replace carpet with wood flooring
- Upgrade 4 inch wood floors to 6 inch wood floors
- Upgraded stainless steel Kitchenaid 5-burner slide in gas range
- Optional stainless steel Kitchenaid 20 cubic foot French door refrigerator with ice maker and filtered water dispenser
- Whirlpool Duet front load washer and dryer
- Nest Thermostats (www.nest.com)
- August Smart Lock (www.august.com)

**Buyer Options are not available on all units*

For further information contact Liz Richards of Kentwood City Properties at (303) 956-2962 or Lrichards@kentwoodcity.com.